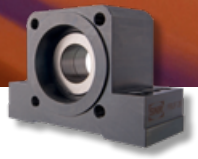




Brand of **NTN Group**

LINEAR MOTION RANGE

The suitable solution for all requests



A large linear motion range to meet every application requirements

COMPACT AXIS



- AXC Series**
Size 40, 60, 80, 100, 120
- Modular design, system universally applicable as single-axis and in complex multiple-axis systems
- Different guiding and drive options
 - Belt drive in Omega design
 - Long-life and long-term maintenance free

PARALLEL AXIS



- AXDL Series**
Size 110, 160, 240
- Profile with high rigidity (especially with synchronous belt drive)
 - Protection against contamination for guide and drive system
 - Long-life and long-term maintenance free

SYSTEM AXIS

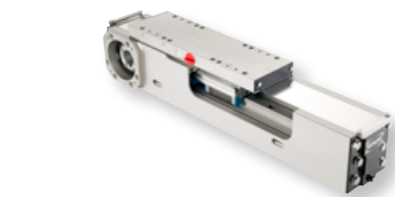


Gantry, lifting and telescopic axis

- Telescopic axis**
- For vertical and horizontal applications
 - Suitable for use in confined installation space
 - Velocity up to 10 m/s

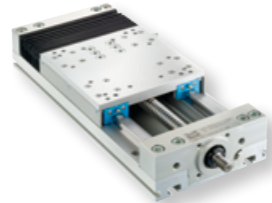
- Lifting axis**
- For loads over 1000 kg

- Gantry axis**
- Undivided length up to 10 m
 - Tooth belt or rack and pinion drive



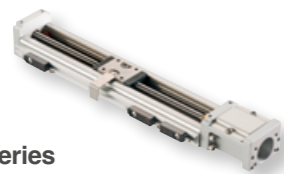
- AXF Series**
Size 100
- Based on the AXC series
- Available with tooth belt and screw drive
 - Specially developed to prevent the deposit of residues at the profile
 - Specifically optimized for food, pharmaceutical and semiconductor industries applications

LINEAR TABLES AXIS



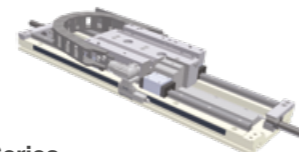
- AXLT Series**
Size 155, 225, 325, 455
- Particularly suitable for high loads, especially torque loads
 - Protected guidance and drive system by optional bellows
 - Can be combined to cross table variations

PRECISION AXIS



- AXBG Series**
Size 15, 20, 26, 33, 46, 55
- Extremely compact design and very rigid steel profile
 - High positioning accuracy

LINEAR MOTOR AXIS



- AXLM Series**
Size 155, 225, 325
- High dynamics and high accuracy
 - Guidance: two parallel assembled linear guides
 - Particularly suitable for high loads, especially torque loads

BALL SCREWS



Diameter 6 to 80 mm for rolled and 4 to 120 mm for grinded ball screws

- Right and left hand helix
- Customized end machining
- Fixed and floating bearing units

BALL BUSHINGS



Diameter 3 to 150 mm

- Standard linear ball bushings and super linear ball bushings
- Standard material and stainless steel available
- Linear Sets
- Support rails, shaft supports, traverses, solid and hollow shafts

LINEAR GUIDES

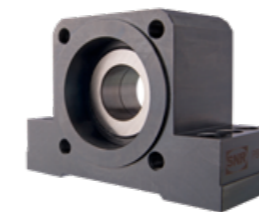


Standard series
Size 15 - 55

Miniature series
Size 07 - 15

- Conventional version and version with patented ball chain technology
- Dimension according to DIN 645
 - High load ratings
 - Long-term maintenance-free for carriages with ball chain
 - Jointed rails with universal combined segments
 - Standard series with 4 ball rows and arrangement of a race ways at a 45° angle
 - Standard carriages with lubrication connection from all sides

BALL SCREW SUPPORT



BSTK - BSTF
Shaft diameter 17 - 60 mm

- High load rating for vertical applications
- Easy assembling
- High service life time
- High rigidity

BK - BF - EK - EF
Shaft diameter 06 - 50 mm

- Asian range of bearing units
- Well known dimension

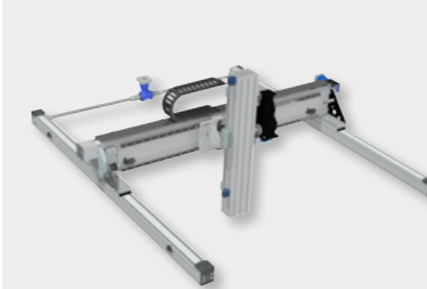
BALL SPLINES



Diameters for:
Cylindrical nuts 04 - 100 mm
Flange type nuts 06 - 60 mm
Rotary type nuts 06 - 60 mm

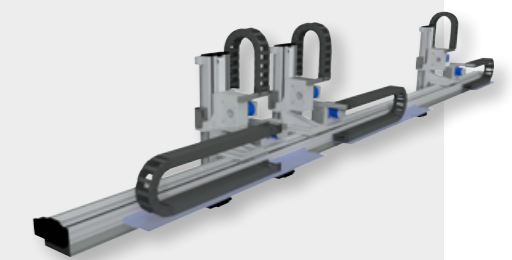
- High linear and rotation velocity
- High load rating
- Torque and force transmission by simultaneous rotation and linear movements
- Customized machining

COMPLETE SYSTEMS



Standard combinations with the AXS, AXC and AXDL range

- Modular design system
- Special solutions for specific or customised applications
 - Optional with switches and energy chains, gantry support legs and all connecting elements
 - Ready for installation



Lifting axis with safety brakes and clamping elements

NTN

Make the world **NAMERAKA**

DOC_LLMRANGE_ARG2_Fa - Document non contractuel - NTN copyright international - 04/24 - Photos: NTN Europe - Pietro Studio Photos

LINEAR MOTION Range

Further information and 3D drawings on:
www.ntn-europe.com

Please send your requests to:
linear.motion@ntn-snr.de

NTN Europe - 1 rue des Usines - 74000 Annecy
RCS ANNECY B 325 821 072 - Code APE 2815Z - Code NACE 28.15
www.ntn-europe.com

This document is the exclusive property of NTN Europe. Any total or partial reproduction hereof without the prior consent of NTN Europe is strictly prohibited. Legal action may be brought against anyone breaching the terms of this paragraph.
NTN Europe shall not be held liable for any errors or omissions that may have crept into this document despite the care taken in drafting it. Due to our policy of continuous research and development, we reserve the right to make changes without notice to all or part of the products and specifications mentioned in this document.
© NTN Europe, international copyright 2024.

