

# TOPLINE

Deep-groove ball bearings developed exclusively for extreme applications

**NTN** 

[www.ntn-snr.com](http://www.ntn-snr.com)



With You

## INNOVATION DRIVING YOUR PRODUCTION

**Movement is constantly changing. It is analysed, brought under control, guided and mastered with the aim of deriving maximum benefit. It is more than a simple concept. It is the very essence of our commitment, namely designing and innovating to deliver the perfect solutions to the issues and constraints of today and tomorrow.**

There are thousands of us around the world masterminding and developing solutions to raise the bar on your production performance. Among the world-leading brands (NTN, BCA, BOWER and SNR) are marketed worldwide and deliver the best-fit solutions for working together and building a more environmentally-friendly society. Follow our lead and use interaction, anticipation and adaptation as the keys to guiding and shaping the future of the manufacturing, automotive and aviation markets.

**5,4 MILLIARDS €**

in FY2019

**24 199**

employees in 2019

### The local service of an international partner



**118**

sales offices

**73**

production sites

**15**

R&D centres

# TOPLINE

## COMMITMENTS

### AVAILABILITY

We believe that service forms the backbone of any customer relationship, our TOPLINE bearings come with fast delivery times, even though they are technically advanced products.

### RELIABILITY

The trust that you place in our products is vitally important, our components and lubricants are approved under real operating conditions at our European test centre in Annecy, France.

### TECHNICAL EXPERTISE

We are committed to providing everyday support and guidance, our teams of experts are on hand to recommend the most suitable TOPLINE products and thereby guarantee the best performance.

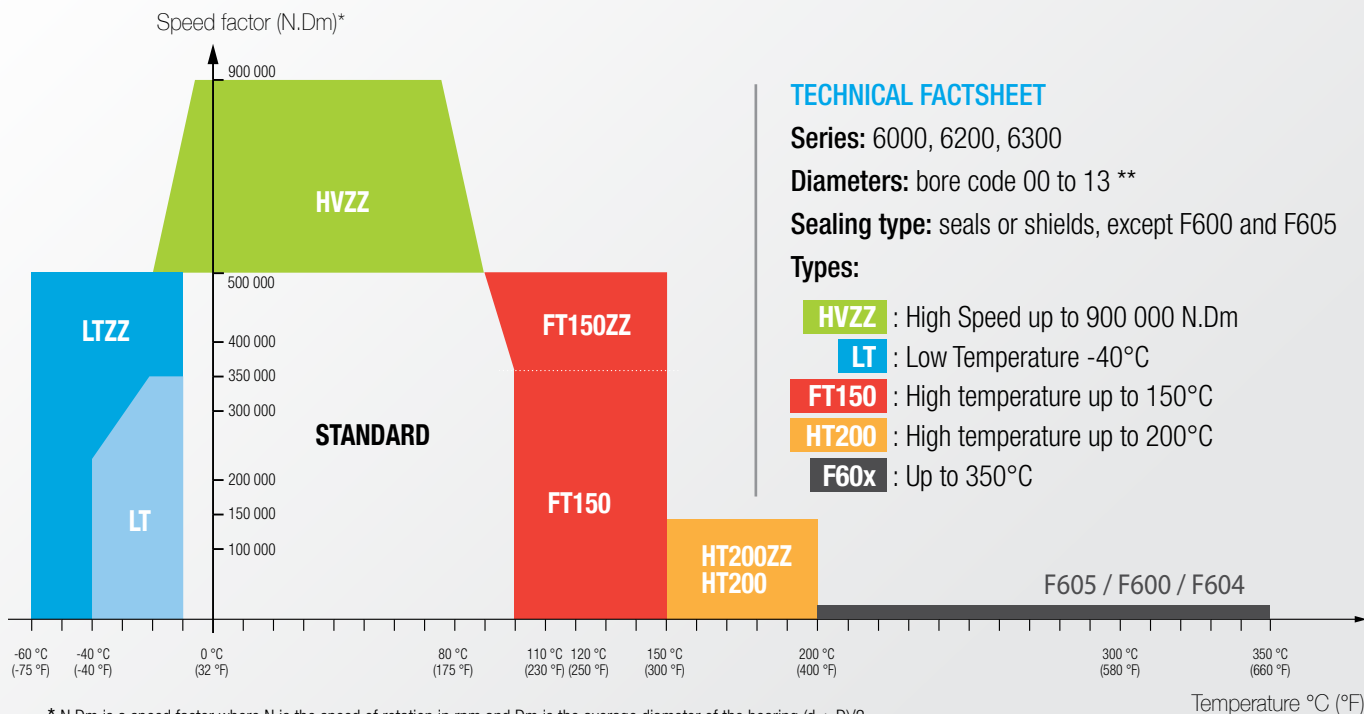
Ask for advice from your local sales representative.

## CONTENTS

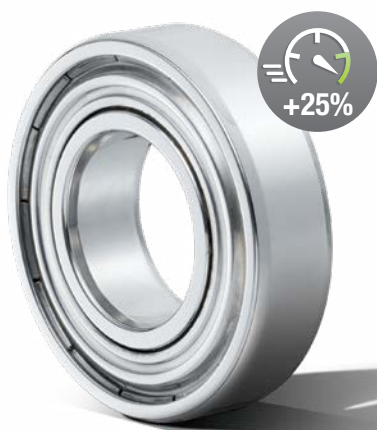
|                                    |    |
|------------------------------------|----|
| <b>TOPLINE: THE SOLUTION</b>       | 4  |
| Technical characteristics          | 6  |
| Read our data tables               | 7  |
| <b>TOPLINE: THE RANGES</b>         | 8  |
| High speed                         | 8  |
| Low temperature down to -60°C      | 9  |
| High temperature up to +150°C      | 10 |
| High temperature up to +200°C      | 12 |
| Very high temperature up to +350°C | 13 |
| Our complementary technical ranges | 14 |

# TOPLINE: THE SOLUTION

Our TOPLINE products are designed to meet the extreme speed or temperature requirements for your applications.



Example: bearing 6206,  $d = 30 \text{ mm} / D = 62 \text{ mm}$   
 $N.Dm = 46 \text{ mm} \times 10,000 \text{ RPM} = 460,000 \text{ N.Dm}$



## HIGH SPEED • HVZZ

These low-torque bearings are perfectly suited to high-speed applications and effectively reduce electricity use.

WOODWORKING MACHINES, ELECTRIC MOTORS, WIRE ROLLING MILLS.



## LOW TEMPERATURE • LT

With its specially adapted grease, this product family is ideal for low-temperature applications and also boasts resistance to humidity.

COLD STORES, CABLE TRANSPORT SYSTEMS.





## HIGH TEMPERATURE UP TO +150°C • FT150

We are dedicated to offering ever greater performance and satisfaction. We have reduced the noise output of our bearings by a factor of four, offering a real benefit for your applications!

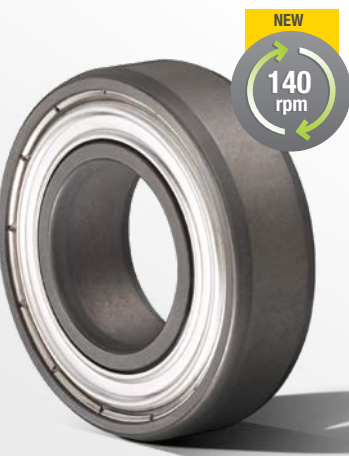
INDUSTRIAL FANS, ELECTRIC MOTORS, CONVEYOR SYSTEMS.



## HIGH TEMPERATURE UP TO +200°C • HT200

This product range can withstand temperatures up to +200°C.

PACKAGING MACHINES, DRYERS, FOOD OVENS.



## VERY HIGH TEMPERATURE UP TO +350°C • F600

To broaden the potential applications for these bearings, we have increased the rotational speed up to 140 RPM.

KILN CARS, MANUFACTURE OF CONSTRUCTION MATERIALS, STEELMAKING.



# TECHNICAL CHARACTERISTICS

We use the best technologies available, so that each product is ideally geared towards your needs.

| Products         | Cage                                 | Internal clearance | Grease  | Sealing                                      | Other   | Temperature range  |
|------------------|--------------------------------------|--------------------|---|--|---|--|
| HVZZ             | Glass fibre reinforced polyamide 6.6 | C3                 | Superior quality. Lithium thickener + synthetic base oil                                  | Steel shields                                | Precision P6, P5. High-precision balls (<= Class 10)              | -20°C to +120°C  |
| LT<br>LTZZ       | Steel                                | C3                 | Suited to low temperatures + presence of humidity. Lithium thickener + synthetic base oil | Nitrile rubber seals (NBR) or steel shields  | -   | LT: -40°C to +100°C<br>LTZZ: -60°C to +120°C                       |
| FT150<br>FT150ZZ | Steel                                | C3                 | Adapted to high temperatures. Polyurea thickener + synthetic base oil                     | Fluoroelastomer seals (FKM) or steel shields | -   | -30°C to +150°C  |
| HT200<br>HT200ZZ | Steel                                | C4                 | Adapted to high temperatures. PTFE solid lubricant and PFPE oil                           | Fluoroelastomer seals (FKM) or steel shields | Specific heat treatment   | -40°C to +200°C  |
| F605             | Steel                                | Multiple of C5*    | **  | -  | Brand is stamped  | Temperature range between +200°C and +350°C (continuous or cyclic) |
| F600             | Steel                                | Multiple of C5*    |   | -  | Specific surface treatment (phosphatisation + MoS2 deposition)*** |  |
| F604             | Steel                                | Multiple of C5*    | Suitable for very high temperatures. Polyalkylene glycol base oil + solid additive        | Steel shields                                | Brand is stamped  |  |

For more information about the temperature ranges, please contact us.



\* Significantly increased internal clearance to offset the material's expansion effects.

\*\* In case of F600 and F605, if additional lubrication is required, an appropriate amount of grease may be introduced into the bearing. Contact NTN-SNR for more information.

\*\*\* Surface treatment for greater oxidation resistance and improved lubrication. Caution: F600 and F604 products must be used with care in damp environments, since MoS2 may react with water to produce sulphuric acid.

# READ OUR DATA TABLES

## CLASSIFICATION BY SERIES IN ASCENDING ORDER

Enter the table arranged by series and bore code in ascending order.

**Example:** Series 6000 of code 00 to 10 and then series 6200 of code 00 to 10, and so on

### HT200 & HT200ZZ

Temperatures up to +200°C

| Reference | Dimensions (mm) |    |    | Basic capacity (kN) |       | Speed (rpm)       |                | Shoulders and fillets (mm) |             |             |             | Weight |      |
|-----------|-----------------|----|----|---------------------|-------|-------------------|----------------|----------------------------|-------------|-------------|-------------|--------|------|
|           | d               | D  | B  | Cr                  | Cor   | Thermal reference | Limiting speed | ra max (mm)                | Da max (mm) | da min (mm) | da max (mm) | kg     | lbs  |
| 6004HT200 | 20              | 42 | 12 | 9,2                 | 5,00  | -                 | 10 000         | 0,6                        | 38,0        | 24,0        | 27,5        | 0,07   | 0,15 |
| 6008HT200 | 40              | 68 | 15 | 16,4                | 11,50 | -                 | 5 900          | 1,0                        | 63,0        | 45,0        | 48,9        | 0,19   | 0,42 |
| 6204HT200 | 20              | 47 | 14 | 12,6                | 6,60  | -                 | 11 000         | 1,0                        | 42,0        | 25,0        | 25,9        | 0,11   | 0,24 |
| 6205HT200 | 25              | 52 | 15 | 13,8                | 7,90  | -                 | 9 000          | 1,0                        | 47,0        | 30,0        | 31,8        | 0,13   | 0,28 |
| 6206HT200 | 30              | 62 | 16 | 19,2                | 11,30 | -                 | 7 600          | 1,0                        | 57,0        | 35,0        | 37,9        | 0,20   | 0,44 |
| 6207HT200 | 35              | 72 | 17 | 25,3                | 15,30 | -                 | 6 500          | 1,0                        | 65,5        | 41,5        | 44,0        | 0,29   | 0,63 |
| 6208HT200 | 40              | 80 | 18 | 28,7                | 17,90 | -                 | 5 700          | 1,0                        | 73,5        | 46,5        | 50,3        | 0,36   | 0,80 |
| 6209HT200 | 45              | 85 | 19 | 32,2                | 20,40 | -                 | 5 300          | 1,0                        | 78,5        | 51,5        | 54,5        | 0,40   | 0,89 |
| 6210HT200 | 50              | 90 | 20 | 34,5                | 23,20 | -                 | 4 800          | 1,0                        | 83,5        | 56,5        | 59,6        | 0,45   | 1,00 |
| 6304HT200 | 20              | 52 | 15 | 15,8                | 7,90  | -                 | 9 500          | 1,0                        | 45,5        | 26,5        | 30,0        | 0,15   | 0,32 |
| 6305HT200 | 25              | 62 | 17 | 23,5                | 12,10 | -                 | 8 500          | 1,0                        | 55,5        | 31,5        | 33,9        | 0,23   | 0,50 |

### ARTICLE DESIGNATION

Each TOPLINE range has its own identifier code, which can be found at the end of our references for quick and easy identification.

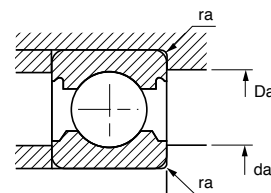
**Example:**

6008HT200 => version 6008 High Temperature up to +200°C

### MAIN TECHNICAL DATA

The main technical characteristics of our products are then presented:

- Product dimensions
- Load capacities
- Speeds
- Shoulders
- Weight



For further information for each article,

**Visit our E-Shop**  
**Scan me!**



# TOPLINE: THE RANGES



## HVZZ • HIGH SPEED

Up to 900,000 N.Dm

For woodworking machines, electric motors, wire rolling mills...



| Reference | Dimensions (mm) |    |    | Basic capacity (kN) |      | Speed (rpm)       |                | Shoulders and fillets (mm) |             |             |             | Weight |      |
|-----------|-----------------|----|----|---------------------|------|-------------------|----------------|----------------------------|-------------|-------------|-------------|--------|------|
|           | d               | D  | B  | Cr                  | Cor  | Thermal reference | Limiting speed | ra max (mm)                | Da max (mm) | da min (mm) | da max (mm) | kg     | lbs  |
| 6000HVZZ  | 10              | 26 | 8  | 4,5                 | 2,0  | 28 000            | 51 000         | 0,3                        | 24,0        | 12,0        | 14,7        | 0,02   | 0,04 |
| 6001HVZZ  | 12              | 28 | 8  | 5,0                 | 2,4  | 24 000            | 46 000         | 0,3                        | 26,0        | 14,0        | 17,2        | 0,02   | 0,05 |
| 6002HVZZ  | 15              | 32 | 9  | 5,4                 | 2,9  | 22 000            | 39 000         | 0,3                        | 30,0        | 17,0        | 20,5        | 0,03   | 0,07 |
| 6003HVZZ  | 17              | 35 | 10 | 5,8                 | 3,3  | 20 000            | 35 000         | 0,3                        | 33,0        | 19,0        | 22,8        | 0,04   | 0,09 |
| 6004HVZZ  | 20              | 42 | 12 | 9,2                 | 5,0  | 18 000            | 29 000         | 0,6                        | 38,0        | 24,0        | 27,5        | 0,07   | 0,15 |
| 6005HVZZ  | 25              | 47 | 12 | 9,8                 | 5,8  | 15 000            | 26 000         | 0,6                        | 43,0        | 29,0        | 31,6        | 0,08   | 0,17 |
| 6006HVZZ  | 30              | 55 | 13 | 13,0                | 8,3  | 13 000            | 21 000         | 1,0                        | 50,0        | 35,0        | 38,2        | 0,12   | 0,26 |
| 6007HVZZ  | 35              | 62 | 14 | 15,7                | 10,3 | 12 000            | 19 000         | 1,0                        | 57,0        | 40,0        | 43,5        | 0,15   | 0,34 |
| 6008HVZZ  | 40              | 68 | 15 | 16,4                | 11,5 | 11 000            | 17 000         | 1,0                        | 63,0        | 45,0        | 48,9        | 0,19   | 0,42 |
| 6009HVZZ  | 45              | 75 | 16 | 20,5                | 15,1 | 9 700             | 15 000         | 1,0                        | 70,0        | 50,0        | 54,2        | 0,24   | 0,54 |
| 6010HVZZ  | 50              | 80 | 16 | 21,1                | 16,6 | 8 900             | 14 000         | 1,0                        | 75,0        | 55,0        | 59,7        | 0,27   | 0,59 |
| 6011HVZZ  | 55              | 90 | 18 | 27,5                | 21,3 | 8 300             | 12 000         | 1,0                        | 83,5        | 61,5        | 65,7        | 0,39   | 0,85 |
| 6201HVZZ  | 12              | 32 | 10 | 6,8                 | 3,1  | 22 000            | 38 000         | 0,6                        | 28,0        | 16,0        | 18,3        | 0,04   | 0,08 |
| 6202HVZZ  | 15              | 35 | 11 | 7,7                 | 3,8  | 20 000            | 33 000         | 0,6                        | 31,0        | 19,0        | 21,1        | 0,05   | 0,10 |
| 6203HVZZ  | 17              | 40 | 12 | 9,4                 | 4,8  | 18 000            | 30 000         | 0,6                        | 36,0        | 21,0        | 24,1        | 0,07   | 0,15 |
| 6204HVZZ  | 20              | 47 | 14 | 12,6                | 6,6  | 16 000            | 25 000         | 1,0                        | 42,0        | 25,0        | 25,9        | 0,11   | 0,24 |
| 6205HVZZ  | 25              | 52 | 15 | 13,8                | 7,9  | 14 000            | 22 000         | 1,0                        | 47,0        | 30,0        | 31,8        | 0,13   | 0,28 |
| 6206HVZZ  | 30              | 62 | 16 | 19,2                | 11,3 | 12 000            | 18 000         | 1,0                        | 57,0        | 35,0        | 37,9        | 0,20   | 0,44 |
| 6207HVZZ  | 35              | 72 | 17 | 25,3                | 15,3 | 10 000            | 16 000         | 1,0                        | 65,5        | 41,5        | 44,0        | 0,29   | 0,63 |
| 6208HVZZ  | 40              | 80 | 18 | 28,7                | 17,9 | 9 300             | 14 000         | 1,0                        | 73,5        | 46,5        | 50,3        | 0,36   | 0,80 |
| 6209HVZZ  | 45              | 85 | 19 | 32,2                | 20,4 | 8 700             | 13 000         | 1,0                        | 78,5        | 51,5        | 54,5        | 0,40   | 0,89 |
| 6210HVZZ  | 50              | 90 | 20 | 34,5                | 23,2 | 8 200             | 12 000         | 1,0                        | 83,5        | 56,5        | 59,6        | 0,45   | 1,00 |
| 6308HVZZ  | 40              | 90 | 23 | 40,3                | 24,0 | 9 000             | 13 000         | 1,5                        | 82,0        | 48,0        | 51,9        | 0,61   | 1,35 |



# LT & LTZZ • LOW TEMPERATURE

Down to -60°C

For cold stores, cable transport systems...



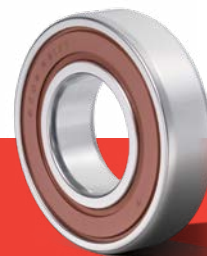
| Reference | Dimensions (mm) |    |    | Basic capacity (kN) |      | Speed (rpm)       |                | Shoulders and fillets (mm) |             |             |             | Weight |      |
|-----------|-----------------|----|----|---------------------|------|-------------------|----------------|----------------------------|-------------|-------------|-------------|--------|------|
|           | d               | D  | B  | Cr                  | Cor  | Thermal reference | Limiting speed | ra max (mm)                | Da max (mm) | da min (mm) | da max (mm) | kg     | lbs  |
| 6002LT    | 15              | 32 | 9  | 5,4                 | 2,9  | -                 | 14000          | 0,3                        | 30,0        | 17,0        | 20,5        | 0,03   | 0,07 |
| 6003LT    | 17              | 35 | 10 | 5,8                 | 3,3  | -                 | 13000          | 0,3                        | 33,0        | 19,0        | 22,8        | 0,04   | 0,09 |
| 6004LT    | 20              | 42 | 12 | 9,2                 | 5,0  | -                 | 10000          | 0,6                        | 38,0        | 24,0        | 27,5        | 0,07   | 0,15 |
| 6005LT    | 25              | 47 | 12 | 9,8                 | 5,8  | -                 | 9100           | 0,6                        | 43,0        | 29,0        | 31,6        | 0,08   | 0,17 |
| 6200LT    | 10              | 30 | 9  | 5,9                 | 2,6  | -                 | 18000          | 0,6                        | 26,0        | 14,0        | 16,0        | 0,03   | 0,07 |
| 6202LT    | 15              | 35 | 11 | 7,7                 | 3,8  | -                 | 14000          | 0,6                        | 31,0        | 19,0        | 21,1        | 0,05   | 0,10 |
| 6203LT    | 17              | 40 | 12 | 9,4                 | 4,8  | -                 | 12000          | 0,6                        | 36,0        | 21,0        | 24,1        | 0,07   | 0,15 |
| 6204LT    | 20              | 47 | 14 | 12,6                | 6,6  | -                 | 11000          | 1,0                        | 42,0        | 25,0        | 25,9        | 0,11   | 0,24 |
| 6205LT    | 25              | 52 | 15 | 13,8                | 7,9  | -                 | 8700           | 1,0                        | 47,0        | 30,0        | 31,8        | 0,13   | 0,28 |
| 6206LT    | 30              | 62 | 16 | 19,2                | 11,3 | -                 | 7300           | 1,0                        | 57,0        | 35,0        | 37,9        | 0,20   | 0,44 |
| 6003LTZZ  | 17              | 35 | 10 | 5,8                 | 3,3  | 20 000            | 15000          | 0,3                        | 33,0        | 19,0        | 22,8        | 0,04   | 0,09 |
| 6004LTZZ  | 20              | 42 | 12 | 9,2                 | 5,0  | 18 000            | 13000          | 0,6                        | 38,0        | 24,0        | 27,5        | 0,07   | 0,15 |
| 6005LTZZ  | 25              | 47 | 12 | 9,8                 | 5,8  | 15 000            | 11000          | 0,6                        | 43,0        | 29,0        | 31,6        | 0,08   | 0,17 |
| 6006LTZZ  | 30              | 55 | 13 | 13,0                | 8,3  | 13 000            | 9300           | 1,0                        | 50,0        | 35,0        | 38,2        | 0,12   | 0,26 |
| 6007LTZZ  | 35              | 62 | 14 | 15,7                | 10,3 | 12 000            | 8100           | 1,0                        | 57,0        | 40,0        | 43,5        | 0,15   | 0,34 |
| 6200LTZZ  | 10              | 30 | 9  | 5,9                 | 2,6  | 23 000            | 20000          | 0,6                        | 26,0        | 14,0        | 16,0        | 0,03   | 0,07 |
| 6204LTZZ  | 20              | 47 | 14 | 12,6                | 6,6  | 16 000            | 12000          | 1,0                        | 42,0        | 25,0        | 25,9        | 0,11   | 0,24 |
| 6205LTZZ  | 25              | 52 | 15 | 13,8                | 7,9  | 14 000            | 10000          | 1,0                        | 47,0        | 30,0        | 31,8        | 0,13   | 0,28 |
| 6206LTZZ  | 30              | 62 | 16 | 19,2                | 11,3 | 12 000            | 8600           | 1,0                        | 57,0        | 35,0        | 37,9        | 0,20   | 0,44 |
| 6304LTZZ  | 20              | 52 | 15 | 15,8                | 7,9  | 14 000            | 11000          | 1,0                        | 45,5        | 26,5        | 30,0        | 0,14   | 0,30 |

NTN-SNR offers an additional range of bearing inserts for low-temperature applications (suffix T04 for the SNR brand and suffix CT1 for the NTN brand)

# FT150 & FT150ZZ • HIGH TEMPERATURE

Up to +150°C

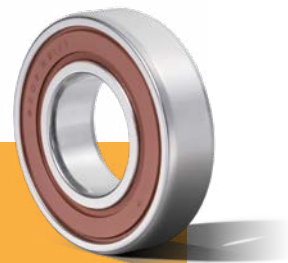
For industrial fans, electric motors, conveyor systems...



| Reference | Dimensions (mm) |     |    | Basic capacity (kN) |      | Speed (rpm)       |                | Shoulders and fillets (mm) |             |             |             | Weight |      |
|-----------|-----------------|-----|----|---------------------|------|-------------------|----------------|----------------------------|-------------|-------------|-------------|--------|------|
|           | d               | D   | B  | Cr                  | Cor  | Thermal reference | Limiting speed | ra max (mm)                | Da max (mm) | da min (mm) | da max (mm) | kg     | lbs  |
| 6000FT150 | 10              | 26  | 8  | 4,5                 | 2,0  | -                 | 20000          | 0,3                        | 24,0        | 12,0        | 14,7        | 0,02   | 0,04 |
| 6001FT150 | 12              | 28  | 8  | 5,0                 | 2,4  | -                 | 17000          | 0,3                        | 26,0        | 14,0        | 17,2        | 0,21   | 0,46 |
| 6002FT150 | 15              | 32  | 9  | 5,4                 | 2,9  | -                 | 14000          | 0,3                        | 30,0        | 17,0        | 20,5        | 0,03   | 0,07 |
| 6003FT150 | 17              | 35  | 10 | 5,8                 | 3,3  | -                 | 13000          | 0,3                        | 33,0        | 19,0        | 22,8        | 0,04   | 0,09 |
| 6004FT150 | 20              | 42  | 12 | 9,2                 | 5,0  | -                 | 10000          | 0,6                        | 38,0        | 24,0        | 27,5        | 0,07   | 0,15 |
| 6005FT150 | 25              | 47  | 12 | 9,8                 | 5,8  | -                 | 9100           | 0,6                        | 43,0        | 29,0        | 31,6        | 0,08   | 0,17 |
| 6006FT150 | 30              | 55  | 13 | 13,0                | 8,3  | -                 | 7500           | 1,0                        | 50,0        | 35,0        | 38,2        | 0,12   | 0,26 |
| 6007FT150 | 35              | 62  | 14 | 15,7                | 10,3 | -                 | 6600           | 1,0                        | 57,0        | 40,0        | 43,5        | 0,15   | 0,34 |
| 6008FT150 | 40              | 68  | 15 | 16,4                | 11,5 | -                 | 5900           | 1,0                        | 63,0        | 45,0        | 48,9        | 0,19   | 0,42 |
| 6009FT150 | 45              | 75  | 16 | 20,5                | 15,1 | -                 | 5300           | 1,0                        | 70,0        | 50,0        | 54,2        | 0,24   | 0,54 |
| 6010FT150 | 50              | 80  | 16 | 21,1                | 16,6 | -                 | 4800           | 1,0                        | 75,0        | 55,0        | 59,7        | 0,27   | 0,59 |
| 6013FT150 | 65              | 100 | 18 | 29,6                | 25,2 | -                 | 3800           | 1,0                        | 93,5        | 71,5        | 75,2        | 0,43   | 0,95 |
| 6200FT150 | 10              | 30  | 9  | 5,9                 | 2,6  | -                 | 18000          | 0,6                        | 26,0        | 14,0        | 16,0        | 0,03   | 0,07 |
| 6201FT150 | 12              | 32  | 10 | 6,8                 | 3,1  | -                 | 16000          | 0,6                        | 28,0        | 16,0        | 18,3        | 0,04   | 0,08 |
| 6202FT150 | 15              | 35  | 11 | 7,7                 | 3,8  | -                 | 14000          | 0,6                        | 31,0        | 19,0        | 21,1        | 0,45   | 0,99 |
| 6203FT150 | 17              | 40  | 12 | 9,4                 | 4,8  | -                 | 12000          | 0,6                        | 36,0        | 21,0        | 24,1        | 0,07   | 0,15 |
| 6204FT150 | 20              | 47  | 14 | 12,6                | 6,6  | -                 | 10000          | 1,0                        | 42,0        | 25,0        | 25,9        | 0,11   | 0,24 |
| 6205FT150 | 25              | 52  | 15 | 13,8                | 7,9  | -                 | 8400           | 1,0                        | 47,0        | 30,0        | 31,8        | 0,13   | 0,28 |
| 6206FT150 | 30              | 62  | 16 | 19,2                | 11,3 | -                 | 7300           | 1,0                        | 57,0        | 35,0        | 37,9        | 0,20   | 0,44 |
| 6207FT150 | 35              | 72  | 17 | 25,3                | 15,3 | -                 | 6300           | 1,0                        | 65,5        | 41,5        | 44,0        | 0,29   | 0,63 |
| 6208FT150 | 40              | 80  | 18 | 28,7                | 17,9 | -                 | 5500           | 1,0                        | 73,5        | 46,5        | 50,3        | 0,37   | 0,82 |
| 6209FT150 | 45              | 85  | 19 | 32,2                | 20,4 | -                 | 5100           | 1,0                        | 78,5        | 51,5        | 54,5        | 0,40   | 0,89 |
| 6210FT150 | 50              | 90  | 20 | 34,5                | 23,2 | -                 | 4700           | 1,0                        | 83,5        | 56,5        | 59,6        | 0,45   | 1,00 |
| 6213FT150 | 65              | 120 | 23 | 56,1                | 40,1 | -                 | 3600           | 1,5                        | 112,0       | 73,0        | 77,5        | 0,99   | 2,18 |
| 6303FT150 | 17              | 47  | 14 | 13,5                | 6,6  | -                 | 10000          | 1,0                        | 42,0        | 22,0        | 27,5        | 0,11   | 0,25 |
| 6304FT150 | 20              | 52  | 15 | 15,8                | 7,9  | -                 | 9500           | 1,0                        | 45,5        | 26,5        | 30,0        | 0,15   | 0,32 |
| 6305FT150 | 25              | 62  | 17 | 23,5                | 12,1 | -                 | 8200           | 1,0                        | 55,5        | 31,5        | 33,9        | 0,23   | 0,50 |
| 6306FT150 | 30              | 72  | 19 | 27,9                | 15,9 | -                 | 6600           | 1,0                        | 65,5        | 36,5        | 42,4        | 0,35   | 0,76 |
| 6307FT150 | 35              | 80  | 21 | 33,0                | 19,2 | -                 | 6000           | 1,5                        | 72,0        | 43,0        | 45,5        | 0,45   | 0,98 |
| 6308FT150 | 40              | 90  | 23 | 40,3                | 24,0 | -                 | 5300           | 1,5                        | 82,0        | 48,0        | 51,9        | 0,61   | 1,35 |
| 6309FT150 | 45              | 100 | 25 | 52,3                | 31,7 | -                 | 4800           | 1,5                        | 92,0        | 53,0        | 59,3        | 0,83   | 1,82 |
| 6310FT150 | 50              | 110 | 27 | 61,3                | 38,3 | -                 | 4200           | 2,0                        | 101,0       | 59,0        | 64,7        | 1,07   | 2,36 |



| Reference   | Dimensions (mm) |     |    | Basic capacity (kN) |      | Speed (rpm)       |                | Shoulders and fillets (mm) |             |             |             | Weight |      |
|-------------|-----------------|-----|----|---------------------|------|-------------------|----------------|----------------------------|-------------|-------------|-------------|--------|------|
|             | d               | D   | B  | Cr                  | Cor  | Thermal reference | Limiting speed | ra max (mm)                | Da max (mm) | da min (mm) | da max (mm) | kg     | lbs  |
| 6000FT150ZZ | 10              | 26  | 8  | 4,5                 | 2,0  | 28000             | 28000          | 0,3                        | 24,0        | 12,0        | 14,7        | 0,02   | 0,04 |
| 6001FT150ZZ | 12              | 28  | 8  | 5,0                 | 2,4  | 24000             | 25000          | 0,3                        | 26,0        | 14,0        | 17,2        | 0,21   | 0,46 |
| 6002FT150ZZ | 15              | 32  | 9  | 5,4                 | 2,9  | 22000             | 21000          | 0,3                        | 30,0        | 17,0        | 20,5        | 0,03   | 0,07 |
| 6003FT150ZZ | 17              | 35  | 10 | 5,8                 | 3,3  | 20000             | 19000          | 0,3                        | 33,0        | 19,0        | 22,8        | 0,04   | 0,09 |
| 6004FT150ZZ | 20              | 42  | 12 | 9,2                 | 5,0  | 18000             | 16000          | 0,6                        | 38,0        | 24,0        | 27,5        | 0,07   | 0,15 |
| 6005FT150ZZ | 25              | 47  | 12 | 9,8                 | 5,8  | 15000             | 14000          | 0,6                        | 43,0        | 29,0        | 31,6        | 0,08   | 0,17 |
| 6006FT150ZZ | 30              | 55  | 13 | 13,0                | 8,3  | 13000             | 12000          | 1,0                        | 50,0        | 35,0        | 38,2        | 0,12   | 0,26 |
| 6007FT150ZZ | 35              | 62  | 14 | 15,7                | 10,3 | 12000             | 10000          | 1,0                        | 57,0        | 40,0        | 43,5        | 0,15   | 0,34 |
| 6008FT150ZZ | 40              | 68  | 15 | 16,4                | 11,5 | 11000             | 9100           | 1,0                        | 63,0        | 45,0        | 48,9        | 0,19   | 0,42 |
| 6009FT150ZZ | 45              | 75  | 16 | 20,5                | 15,1 | 9700              | 8200           | 1,0                        | 70,0        | 50,0        | 54,2        | 0,24   | 0,54 |
| 6010FT150ZZ | 50              | 80  | 16 | 21,1                | 16,6 | 8900              | 7500           | 1,0                        | 75,0        | 55,0        | 59,7        | 0,27   | 0,59 |
| 6200FT150ZZ | 10              | 30  | 9  | 5,9                 | 2,6  | 23000             | 25000          | 0,6                        | 26,0        | 14,0        | 16,0        | 0,03   | 0,07 |
| 6201FT150ZZ | 12              | 32  | 10 | 6,8                 | 3,1  | 22000             | 23000          | 0,6                        | 28,0        | 16,0        | 18,3        | 0,04   | 0,08 |
| 6202FT150ZZ | 15              | 35  | 11 | 7,7                 | 3,8  | 20000             | 20000          | 0,6                        | 31,0        | 19,0        | 21,1        | 0,04   | 0,09 |
| 6203FT150ZZ | 17              | 40  | 12 | 9,4                 | 4,8  | 18000             | 17000          | 0,6                        | 36,0        | 21,0        | 24,1        | 0,07   | 0,15 |
| 6204FT150ZZ | 20              | 47  | 14 | 12,6                | 6,6  | 16000             | 15000          | 1,0                        | 42,0        | 25,0        | 25,9        | 0,11   | 0,24 |
| 6205FT150ZZ | 25              | 52  | 15 | 13,8                | 7,9  | 14000             | 13000          | 1,0                        | 47,0        | 30,0        | 31,8        | 0,13   | 0,28 |
| 6206FT150ZZ | 30              | 62  | 16 | 19,2                | 11,3 | 12000             | 11000          | 1,0                        | 57,0        | 35,0        | 37,9        | 0,20   | 0,44 |
| 6207FT150ZZ | 35              | 72  | 17 | 25,3                | 15,3 | 10000             | 9200           | 1,0                        | 65,5        | 41,5        | 44,0        | 0,29   | 0,63 |
| 6208FT150ZZ | 40              | 80  | 18 | 28,7                | 17,9 | 9300              | 8200           | 1,0                        | 73,5        | 46,5        | 50,3        | 0,36   | 0,80 |
| 6209FT150ZZ | 45              | 85  | 19 | 32,2                | 20,4 | 8700              | 7600           | 1,0                        | 78,5        | 51,5        | 54,5        | 0,40   | 0,89 |
| 6210FT150ZZ | 50              | 90  | 20 | 34,5                | 23,2 | 8200              | 7000           | 1,0                        | 83,5        | 56,5        | 59,6        | 0,45   | 1,00 |
| 6300FT150ZZ | 10              | 35  | 11 | 8,1                 | 3,5  | 21000             | 22000          | 0,6                        | 31,0        | 14,0        | 15,4        | 0,05   | 0,12 |
| 6301FT150ZZ | 12              | 37  | 12 | 9,7                 | 4,2  | 20000             | 20000          | 1,0                        | 32,0        | 17,0        | 19,3        | 0,06   | 0,13 |
| 6302FT150ZZ | 15              | 42  | 13 | 11,2                | 5,3  | 18000             | 17000          | 1,0                        | 37,0        | 20,0        | 23,2        | 0,08   | 0,18 |
| 6303FT150ZZ | 17              | 47  | 14 | 13,5                | 6,6  | 16000             | 15000          | 1,0                        | 42,0        | 22,0        | 27,5        | 0,11   | 0,25 |
| 6304FT150ZZ | 20              | 52  | 15 | 15,8                | 7,9  | 14000             | 14000          | 1,0                        | 45,5        | 26,5        | 30,0        | 0,15   | 0,32 |
| 6305FT150ZZ | 25              | 62  | 17 | 23,5                | 12,1 | 12000             | 11000          | 1,0                        | 55,5        | 31,5        | 33,9        | 0,23   | 0,50 |
| 6306FT150ZZ | 30              | 72  | 19 | 27,9                | 15,9 | 11000             | 9500           | 1,0                        | 65,5        | 36,5        | 42,4        | 0,35   | 0,76 |
| 6307FT150ZZ | 35              | 80  | 21 | 33,0                | 19,2 | 9900              | 8500           | 1,5                        | 72,0        | 43,0        | 45,5        | 0,45   | 0,98 |
| 6308FT150ZZ | 40              | 90  | 23 | 40,3                | 24,0 | 9000              | 7600           | 1,5                        | 82,0        | 48,0        | 51,9        | 0,61   | 1,35 |
| 6309FT150ZZ | 45              | 100 | 25 | 52,3                | 31,7 | 8300              | 6800           | 1,5                        | 92,0        | 53,0        | 59,3        | 0,83   | 1,82 |



# HT200 & HT200ZZ • HIGH TEMPERATURE

Up to +200°C

For packaging machines, dryers, food ovens...



| Reference   | Dimensions (mm) |     |    | Basic capacity (kN) |       | Speed (rpm)       |                | Shoulders and fillets (mm) |             |             |             | Weight |      |
|-------------|-----------------|-----|----|---------------------|-------|-------------------|----------------|----------------------------|-------------|-------------|-------------|--------|------|
|             | d               | D   | B  | Cr                  | Cor   | Thermal reference | Limiting speed | ra max (mm)                | Da max (mm) | da min (mm) | da max (mm) | kg     | lbs  |
| 6004HT200   | 20              | 42  | 12 | 9,2                 | 5,00  | -                 | 10000          | 0,6                        | 38,0        | 24,0        | 27,5        | 0,07   | 0,15 |
| 6008HT200   | 40              | 68  | 15 | 16,4                | 11,50 | -                 | 5900           | 1,0                        | 63,0        | 45,0        | 48,9        | 0,19   | 0,42 |
| 6204HT200   | 20              | 47  | 14 | 12,6                | 6,60  | -                 | 11000          | 1,0                        | 42,0        | 25,0        | 25,9        | 0,11   | 0,24 |
| 6205HT200   | 25              | 52  | 15 | 13,8                | 7,90  | -                 | 8700           | 1,0                        | 47,0        | 30,0        | 31,8        | 0,13   | 0,28 |
| 6206HT200   | 30              | 62  | 16 | 19,2                | 11,30 | -                 | 7300           | 1,0                        | 57,0        | 35,0        | 37,9        | 0,20   | 0,44 |
| 6207HT200   | 35              | 72  | 17 | 25,3                | 15,30 | -                 | 6300           | 1,0                        | 65,5        | 41,5        | 44,0        | 0,29   | 0,63 |
| 6208HT200   | 40              | 80  | 18 | 28,7                | 17,90 | -                 | 5500           | 1,0                        | 73,5        | 46,5        | 50,3        | 0,36   | 0,80 |
| 6209HT200   | 45              | 85  | 19 | 32,2                | 20,40 | -                 | 5100           | 1,0                        | 78,5        | 51,5        | 54,5        | 0,40   | 0,89 |
| 6210HT200   | 50              | 90  | 20 | 34,5                | 23,20 | -                 | 4700           | 1,0                        | 83,5        | 56,5        | 59,6        | 0,45   | 1,00 |
| 6304HT200   | 20              | 52  | 15 | 15,8                | 7,90  | -                 | 9500           | 1,0                        | 45,5        | 26,5        | 30,0        | 0,15   | 0,32 |
| 6305HT200   | 25              | 62  | 17 | 23,5                | 12,10 | -                 | 8100           | 1,0                        | 55,5        | 31,5        | 33,9        | 0,23   | 0,50 |
| 6306HT200   | 30              | 72  | 19 | 27,9                | 15,90 | -                 | 6600           | 1,0                        | 65,5        | 36,5        | 42,4        | 0,35   | 0,76 |
| 6308HT200   | 40              | 90  | 23 | 40,3                | 24,00 | -                 | 5300           | 1,5                        | 82,0        | 48,0        | 51,9        | 0,61   | 1,35 |
| 6310HT200   | 50              | 110 | 27 | 61,3                | 38,30 | -                 | 4200           | 2,0                        | 101,0       | 59,0        | 64,7        | 1,07   | 2,36 |
| 6005HT200ZZ | 25              | 47  | 12 | 9,8                 | 5,8   | 15000             | 6700           | 0,6                        | 43,0        | 29,0        | 31,6        | 0,08   | 0,18 |
| 6201HT200ZZ | 12              | 32  | 10 | 6,8                 | 3,10  | 22000             | 11000          | 0,6                        | 28,0        | 16,0        | 18,3        | 0,04   | 0,08 |
| 6202HT200ZZ | 15              | 35  | 11 | 7,7                 | 3,75  | 20000             | 9400           | 0,6                        | 31,0        | 19,0        | 21,1        | 0,05   | 0,10 |
| 6203HT200ZZ | 17              | 40  | 12 | 9,4                 | 4,75  | 18000             | 8400           | 0,6                        | 36,0        | 21,0        | 24,1        | 0,07   | 0,15 |
| 6204HT200ZZ | 20              | 47  | 14 | 12,6                | 6,60  | 16000             | 7100           | 1,0                        | 42,0        | 25,0        | 25,9        | 0,11   | 0,24 |
| 6205HT200ZZ | 25              | 52  | 15 | 13,8                | 7,90  | 14000             | 6100           | 1,0                        | 47,0        | 30,0        | 31,8        | 0,13   | 0,28 |
| 6206HT200ZZ | 30              | 62  | 16 | 19,2                | 11,30 | 12000             | 5200           | 1,0                        | 57,0        | 35,0        | 37,9        | 0,20   | 0,44 |
| 6207HT200ZZ | 35              | 72  | 17 | 25,3                | 15,30 | 10000             | 4400           | 1,0                        | 65,5        | 41,5        | 44,0        | 0,29   | 0,63 |
| 6208HT200ZZ | 40              | 80  | 18 | 28,7                | 17,90 | 9300              | 3900           | 1,0                        | 73,5        | 46,5        | 50,3        | 0,36   | 0,80 |
| 6209HT200ZZ | 45              | 85  | 19 | 32,2                | 20,40 | 8700              | 3600           | 1,0                        | 78,5        | 51,5        | 54,5        | 0,40   | 0,89 |
| 6210HT200ZZ | 50              | 90  | 20 | 34,5                | 23,20 | 8200              | 3400           | 1,0                        | 83,5        | 56,5        | 59,6        | 0,45   | 1,00 |
| 6304HT200ZZ | 20              | 52  | 15 | 15,8                | 7,90  | 14000             | 6600           | 1,0                        | 45,5        | 26,5        | 30,0        | 0,15   | 0,32 |
| 6305HT200ZZ | 25              | 62  | 17 | 23,5                | 12,10 | 12000             | 5500           | 1,0                        | 55,5        | 31,5        | 33,9        | 0,23   | 0,50 |
| 6306HT200ZZ | 30              | 72  | 19 | 27,9                | 15,90 | 11000             | 4600           | 1,0                        | 65,5        | 36,5        | 42,4        | 0,35   | 0,76 |
| 6307HT200ZZ | 35              | 80  | 21 | 33,0                | 19,20 | 9900              | 4100           | 1,5                        | 72,0        | 43,0        | 45,5        | 0,45   | 0,98 |
| 6308HT200ZZ | 40              | 90  | 23 | 40,3                | 24,00 | 9000              | 3600           | 1,5                        | 82,0        | 48,0        | 51,9        | 0,61   | 1,35 |
| 6309HT200ZZ | 45              | 100 | 25 | 52,3                | 31,70 | 8300              | 3200           | 1,5                        | 92,0        | 53,0        | 59,3        | 0,83   | 1,82 |
| 6310HT200ZZ | 50              | 110 | 27 | 61,3                | 38,30 | 7700              | 2900           | 2,0                        | 101,0       | 59,0        | 64,7        | 1,07   | 2,36 |

NTN-SNR offers an additional range of bearing inserts for temperatures up to +200°C (suffix T20 for the SNR brand and suffix HT2 for the NTN brand)

# F605, F600 & F604 • VERY HIGH TEMPERATURE

Up to +350°C

For kiln cars, manufacture of construction materials, steelmaking...



| Reference | Quantity of lubricant (g) |      |   | Dimensions (mm) |    |     | Limiting speed (rpm) | Shoulders and fillets (mm) |             |             | Weight |      | Maximum permitted load recommended per bearing (kN) |      |      |      |  |      |      |      |      |
|-----------|---------------------------|------|---|-----------------|----|-----|----------------------|----------------------------|-------------|-------------|--------|------|---|------|------|------|--|------|------|------|------|
|           |                           |      |   | d               | D  | B   |                      | ra max (mm)                | Da max (mm) | da min (mm) | kg     | lbs  | Idler (2 bearings per wheel)                        |      |      |      | Axle on two bearings (one bearing per wheel) |      |      |      |      |
|           |                           |      |   |                 |    |     |                      |                            |             |             |        |      | 200°  | 250° | 300° | 350° | 200°   | 250° | 300° | 350° |      |
| F605      | F600                      | F604 |   |                 |    |     |                      |                            |             |             |        |      |   |      |      |      |  |      |      |      |      |
| 6004      | X                         | X    | X | 1,4             | 20 | 42  | 12                   | 140                        | 0,6         | 38,0        | 24,0   | 0,07 | 0,15  | 1,7  | 1,5  | 1,3  | 1,0  | 2,4  | 2,3  | 2,0  | 1,6  |
| 6005      |                           |      | X | 1,4             | 25 | 47  | 12                   | 120                        | 0,6         | 43,0        | 29,0   | 0,08 | 0,18  | 1,9  | 1,7  | 1,5  | 1,2  | 2,8  | 2,6  | 2,3  | 1,9  |
| 6007      | X                         | X    | X | 3,2             | 35 | 62  | 14                   | 90                         | 1,0         | 57,0        | 40,0   | 0,15 | 0,33  | 3,4  | 3,1  | 2,6  | 2,1  | 4,9  | 4,6  | 4,1  | 3,3  |
| 6008      | X                         | X    | X | 3,9             | 40 | 68  | 15                   | 80                         | 1,0         | 63,0        | 45,0   | 0,19 | 0,41  | 3,8  | 3,5  | 2,9  | 2,3  | 5,5  | 5,2  | 4,6  | 3,7  |
| 6201      |                           |      | X | 1,0             | 12 | 32  | 10                   | 200                        | 0,6         | 28,0        | 16,0   | 0,04 | 0,09  | 1,0  | 0,9  | 0,8  | 0,6  | 1,5  | 1,4  | 1,2  | 1,0  |
| 6204      | X                         | X    | X | 2,3             | 20 | 47  | 14                   | 130                        | 1,0         | 42,0        | 25,0   | 0,10 | 0,23  | 2,2  | 2,0  | 1,7  | 1,3  | 3,2  | 3,0  | 2,6  | 2,1  |
| 6205      | X                         | X    | X | 2,7             | 25 | 52  | 15                   | 110                        | 1,0         | 47,0        | 30,0   | 0,13 | 0,28  | 2,6  | 2,4  | 2,0  | 1,6  | 3,8  | 3,6  | 3,2  | 2,5  |
| 6206      | X                         | X    | X | 4,0             | 30 | 62  | 16                   | 100                        | 1,0         | 57,0        | 35,0   | 0,19 | 0,43  | 3,7  | 3,4  | 2,8  | 2,3  | 5,4  | 5,1  | 4,5  | 3,6  |
| 6207      | X                         | X    | X | 5,7             | 35 | 72  | 17                   | 80                         | 1,0         | 65,5        | 41,5   | 0,27 | 0,60  | 5,0  | 4,6  | 3,8  | 3,1  | 7,3  | 6,9  | 6,1  | 4,9  |
| 6208      | X                         | X    | X | 7,6             | 40 | 80  | 18                   | 70                         | 1,0         | 73,5        | 46,5   | 0,35 | 0,78  | 5,9  | 5,4  | 4,5  | 3,6  | 8,6  | 8,1  | 7,2  | 5,7  |
| 6209      | X                         | X    | X | 9,3             | 45 | 85  | 19                   | 70                         | 1,0         | 78,5        | 51,5   | 0,39 | 0,87  | 6,8  | 6,2  | 5,1  | 4,1  | 9,8  | 9,2  | 8,2  | 6,6  |
| 6210      | X                         | X    | X | 10,8            | 50 | 90  | 20                   | 60                         | 1,0         | 83,5        | 56,5   | 0,44 | 0,97  | 7,7  | 7,0  | 5,8  | 4,6  | 11,1 | 10,4 | 9,3  | 7,4  |
| 6211      | X                         | X    | X | 13,5            | 55 | 100 | 21                   | 60                         | 1,5         | 92,0        | 63,0   | 0,58 | 1,29  | 9,6  | 8,7  | 7,3  | 5,8  | 13,9 | 13,1 | 11,6 | 9,3  |
| 6212      | X                         | X    | X | 17,7            | 60 | 110 | 22                   | 50                         | 1,5         | 102,0       | 68,0   | 0,73 | 1,61  | 11,9 | 10,8 | 9,0  | 7,2  | 17,3 | 16,2 | 14,4 | 11,5 |
| 6213      | X                         | X    | X | 20,4            | 65 | 120 | 23                   | 50                         | 1,5         | 112,0       | 73,0   | 0,94 | 2,08  | 13,2 | 12,0 | 10,0 | 8,0  | 19,2 | 18,0 | 16,0 | 12,8 |
| 6214      | X                         | X    | X | 24,5            | 70 | 125 | 24                   | 40                         | 1,5         | 117,0       | 78,0   | 1,03 | 2,27  | 14,5 | 13,2 | 11,0 | 8,8  | 21,1 | 19,8 | 17,6 | 14,1 |
| 6217      |                           | X    |   | -               | 85 | 150 | 28                   | 40                         | 2,0         | 139,0       | 96,0   | 1,79 | 3,96  | 21,1 | 19,2 | 16,0 | 12,8   | 30,7 | 28,8 | 25,6 | 20,5 |
| 6305      | X                         | X    | X | 5,1             | 25 | 62  | 17                   | 100                        | 1,0         | 55,5        | 31,5   | 0,24 | 0,52  | 4,0  | 3,7  | 3,1  | 2,4  | 5,9  | 5,5  | 4,9  | 3,9  |
| 6306      | X                         | X    | X | 6,9             | 30 | 72  | 19                   | 90                         | 1,0         | 65,5        | 36,5   | 0,35 | 0,76  | 5,2  | 4,7  | 4,0  | 3,2  | 7,6  | 7,1  | 6,3  | 5,1  |
| 6307      | X                         | X    |   | -               | 35 | 80  | 21                   | 80                         | 1,5         | 72,0        | 43,0   | 0,45 | 0,99  | 6,4  | 5,8  | 4,8  | 3,8  | 9,2  | 8,6  | 7,7  | 6,1  |
| 6309      | X                         | X    | X | 18,9            | 45 | 100 | 25                   | 60                         | 1,5         | 92,0        | 53,0   | 0,83 | 1,83  | 10,4 | 9,5  | 7,9  | 6,3  | 15,1 | 14,2 | 12,6 | 10,1 |
| 6310      | X                         |      |   | -               | 50 | 110 | 27                   | 50                         | 2,0         | 101,0       | 59,0   | 1,07 | 2,36  | 12,5 | 11,4 | 9,5  | 7,6  | 18,2 | 17,1 | 15,2 | 12,2 |
| 6311      | X                         | X    | X | 31,1            | 55 | 120 | 29                   | 50                         | 2,0         | 111,0       | 64,0   | 1,35 | 2,98  | 14,7 | 13,4 | 11,1 | 8,9  | 21,4 | 20,0 | 17,8 | 14,2 |
| 6312      | X                         |      |   | -               | 60 | 130 | 31                   | 50                         | 2,0         | 119,0       | 71,0   | 1,68 | 3,70  | 17,2 | 15,6 | 13,0 | 10,4   | 25,0 | 23,4 | 20,8 | 16,6 |

## OUR COMPLEMENTARY TECHNICAL RANGES

Whatever your operating constraints, we have the solution!



### SOLID GREASE BEARINGS **LP03**

- Through-hardened steel or stainless steel
- **Ideal for oscillating applications**
- **Suited to restrictive environments:**  
no contamination or grease leaks
- Temperatures from 0°C to +80°C



### HIGH-TEMPERATURE INSERT BEARINGS **T20**

- Identifiable with the T20 suffix
- **Ideal for temperatures up to +200°C**



## INSULATED BEARINGS MEGAOHM®

### CUSTOMER BENEFITS

- **Superior protection** against current leakage
- **Robust design** with the machined brass cage
- **Guaranteed interchangeability**
- **Stock availability** for the most frequently used products (62xx and 63xx series deep-groove ball bearings)



**How can you identify them in our range?  
With the 7MC3 prefix!**

### TECHNICAL CHARACTERISTICS

- **Machined brass cage available in stock (suffix L1B)** and steel cage on request (no suffix)
- **C3 internal clearance available in stock** and C4 on request
- Resistance up to **3,000 VDC**
- **Ceramic layer on the outer ring** (thickness of 200 µm)
- **Compliant** with ISO 492, DIN 620 and JIS 1514

### RANGE OVERVIEW

| Series         | Bore diameter code |    |    |    |    |    |    |    |    |    |    |    |    |
|----------------|--------------------|----|----|----|----|----|----|----|----|----|----|----|----|
|                | 10                 | 12 | 14 | 15 | 16 | 17 | 18 | 19 | 20 | 22 | 24 | 28 | 30 |
| 7MC3-62XXL1BC3 |                    |    |    |    |    |    |    |    |    |    |    |    |    |
| 7MC3-63XXL1BC3 |                    |    |    |    |    |    |    |    |    |    |    |    |    |
| 7MC3-63XXL1BC4 |                    |    |    |    |    |    |    |    |    |    |    |    |    |

Reference example: 7MC3-6316L1BC3



# TOPLINE

Deep-groove ball bearings developed exclusively for extreme applications

This document is the exclusive property of NTN-SNR ROULEMENTS. Any total or partial reproduction hereof without the prior consent of NTN-SNR ROULEMENTS is strictly prohibited. Legal action may be brought against anyone breaching the terms of this paragraph.

NTN-SNR ROULEMENTS shall not be held liable for any errors or omissions that may have crept into this document despite the care taken in drafting it. Due to our policy of continuous research and development, we reserve the right to make changes without notice to all or part of the products and specifications mentioned in this document.

© NTN-SNR ROULEMENTS, international copyright 2019.

NTN-SNR ROULEMENTS - 1 rue des Usines - 74000 Annecy  
RCS ANNECY B 325 821 072 - Code APE 2815Z - Code NACE 28.15  
[www.ntn-snr.com](http://www.ntn-snr.com)



With You



DOC\_L\_TOPLINE\_CAT2:Fa - Conception et réalisation : Service publicité NTN-SNR © 2020/09 - Photos : © Pedro Studio Photos - Shutterstock